

About Today

The National

Track: Percussion - Drums

Intro ♩ = 105

1 2

4/4

3 4

5 6

7 8

To- day

Verse 1

9 10

11 12

You were far a-

13 14

way

15 16

And I

17

Musical notation for measures 17 and 18. Each measure contains two staves: a vocal line with a melody of quarter notes and a piano accompaniment line with chords and quarter notes. Measure 17 ends with a fermata over the final note.

18

Musical notation for measure 18, continuing from the previous measure with the same two-staff structure.

19

Musical notation for measure 19, continuing the two-staff structure.

20

Musical notation for measure 20, continuing the two-staff structure.

Didn't ask you why

Verse 2

21

Musical notation for measure 21, starting the second verse with the same two-staff structure.

22

Musical notation for measure 22, continuing the two-staff structure.

23

Musical notation for measure 23, continuing the two-staff structure.

24

Musical notation for measure 24, continuing the two-staff structure.

What could I

25

Musical notation for measure 25, continuing the two-staff structure.

26

Musical notation for measure 26, continuing the two-staff structure.

say

27

Musical notation for measure 27, continuing the two-staff structure.

28

Musical notation for measure 28, continuing the two-staff structure.

I was far a-

29

Musical notation for measure 29, continuing the two-staff structure.

30

Musical notation for measure 30, continuing the two-staff structure.

way

31

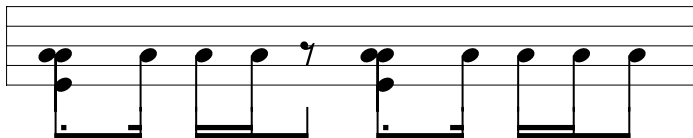
Musical notation for measure 31, continuing the two-staff structure.

32

Musical notation for measure 32, continuing the two-staff structure.

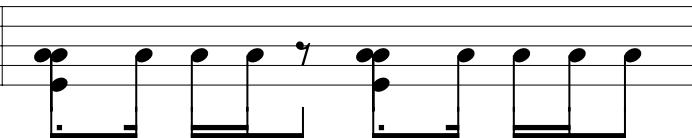
You just walked a-

33

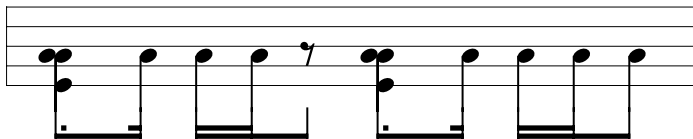


way

34

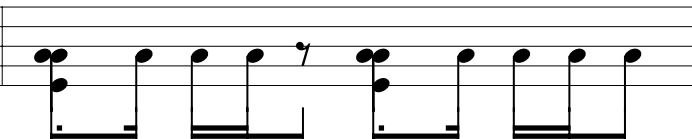


35



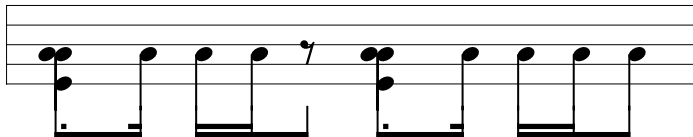
And I

36

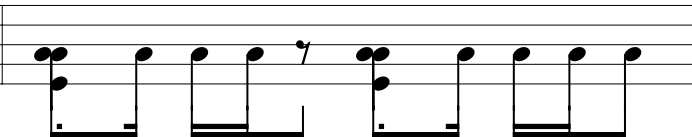


just watched you

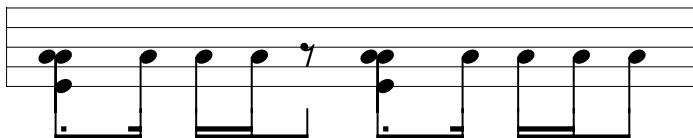
37



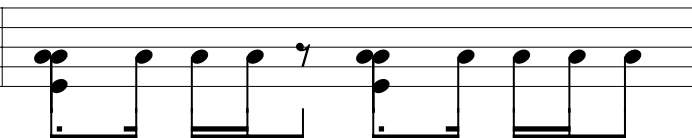
38



39



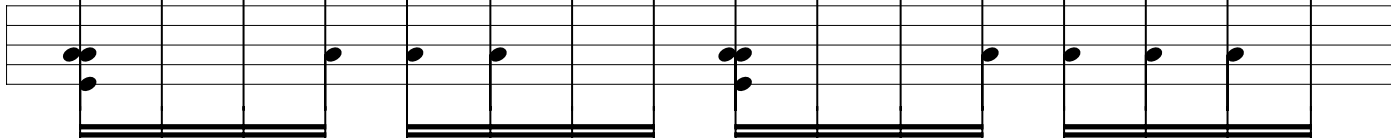
40



What could I

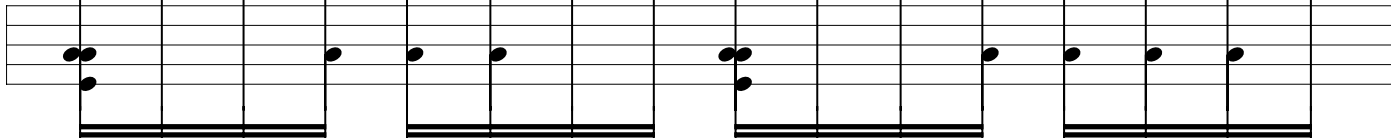
Chorus

41

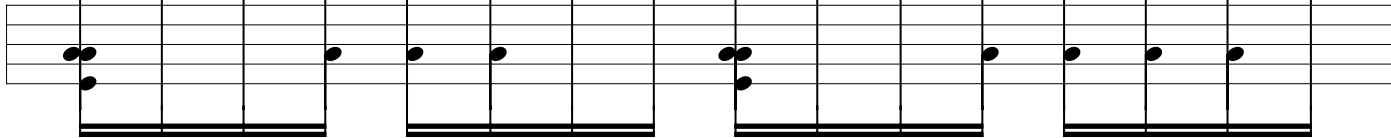


say

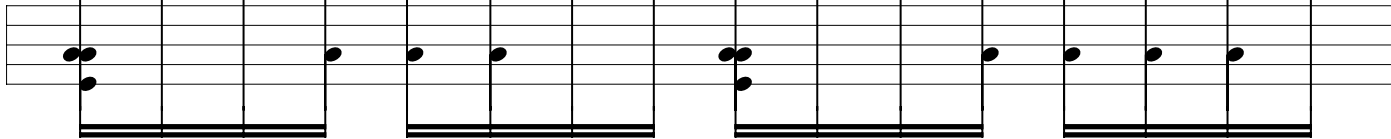
42



43

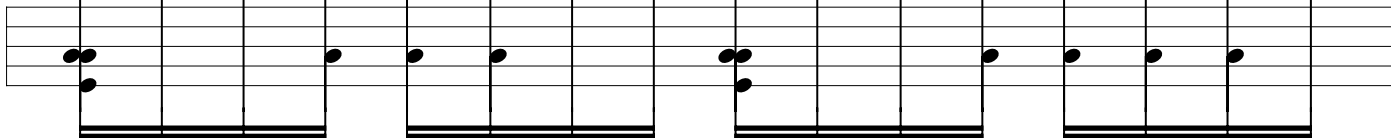


44



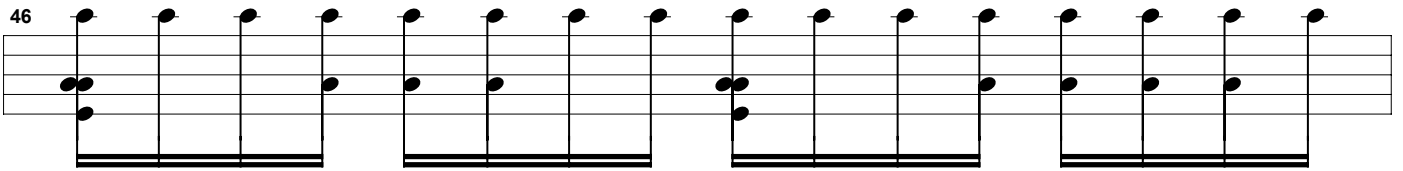
How close am

45

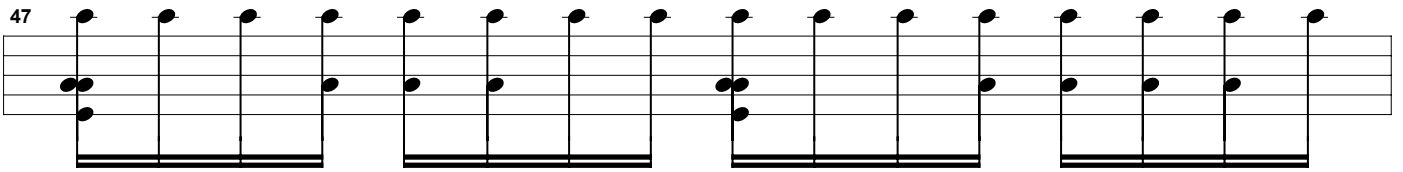


I

46

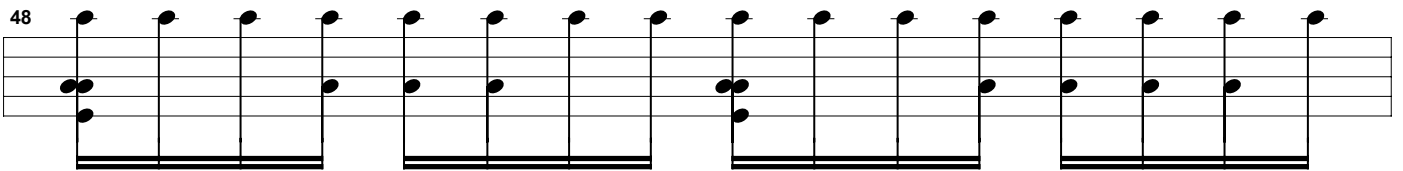


47



To lo-

48

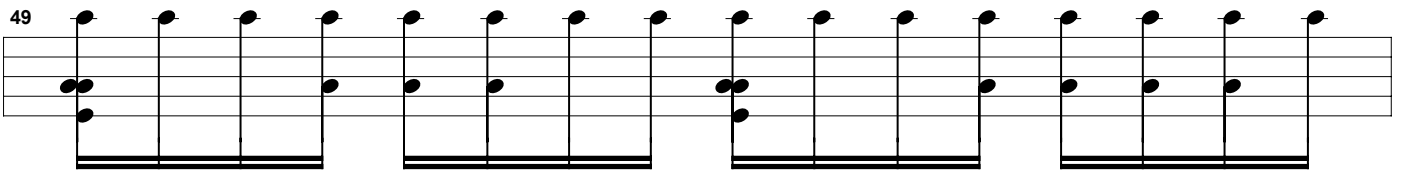


sing

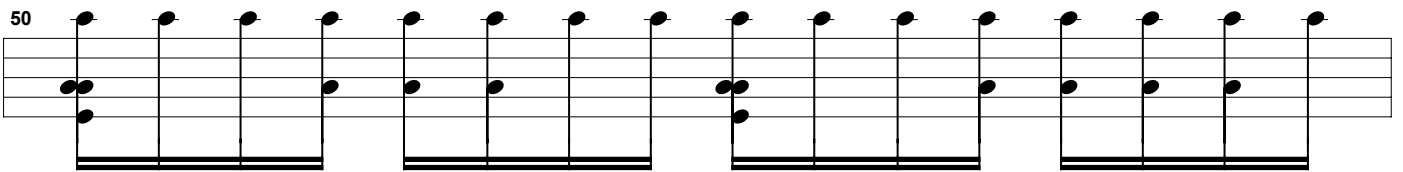
you

Post-Chorus

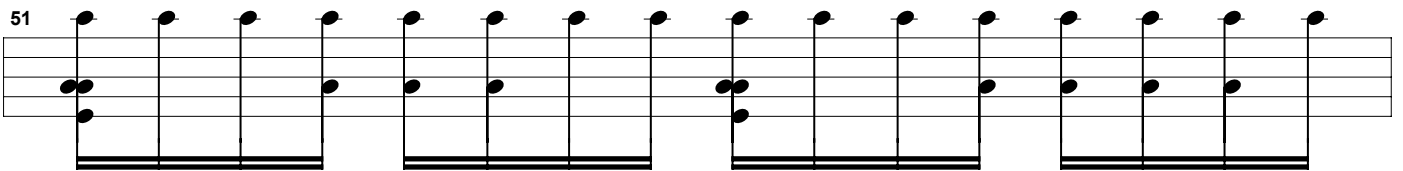
49



50



51




52



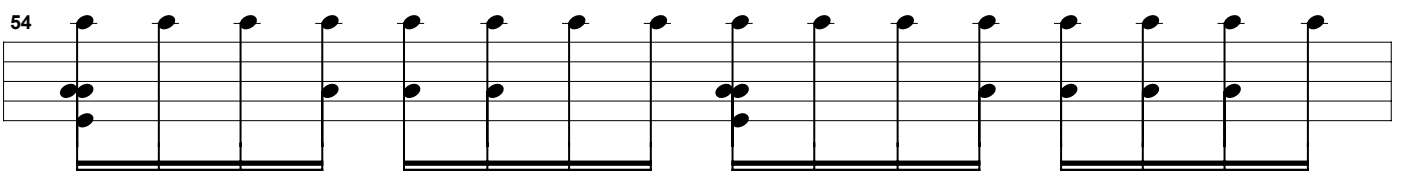
To- night

Verse 3

53



54



55

56

You just closed your

57

eyes

58

59

And I

60

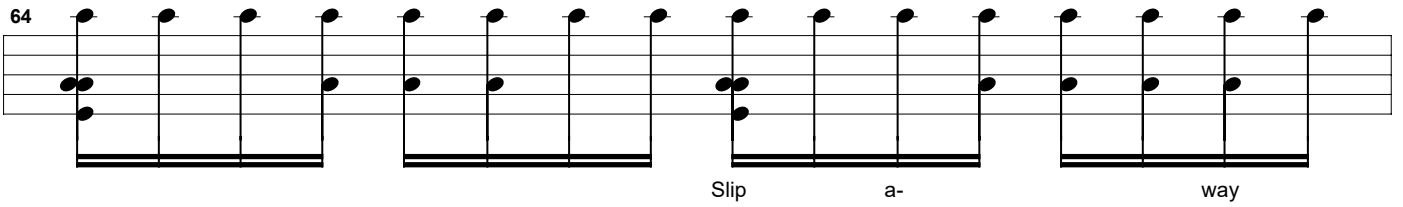
just watched you

61

62

63

64

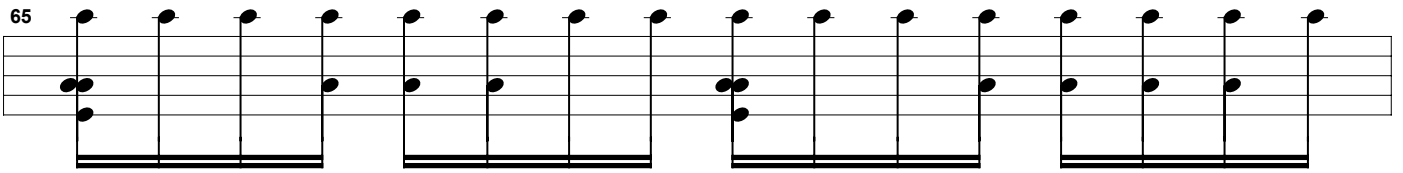


Slip a- way

Detailed description: This block contains the first four measures of a musical staff. Each measure consists of a treble clef, a key signature of one flat (B-flat), and a 4/4 time signature. The melody is written on a single line, and the bass line is indicated by a double line below the staff. The notes are: Measure 64: G4, A4, B4, C5; Measure 65: G4, A4, B4, C5; Measure 66: G4, A4, B4, C5; Measure 67: G4, A4, B4, C5. The lyrics 'Slip a- way' are positioned below the staff, with 'Slip' under the first measure, 'a-' under the second, and 'way' under the fourth.

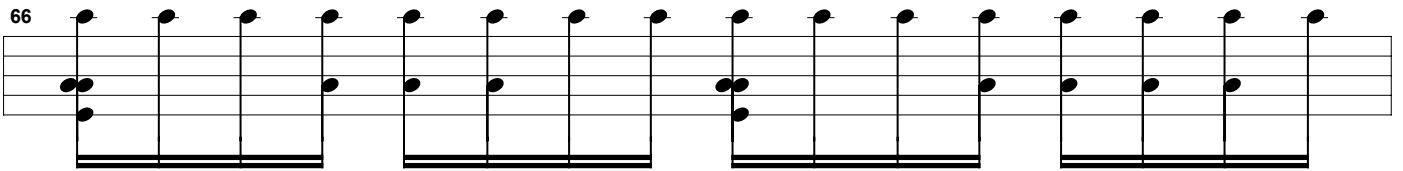
Chorus

65



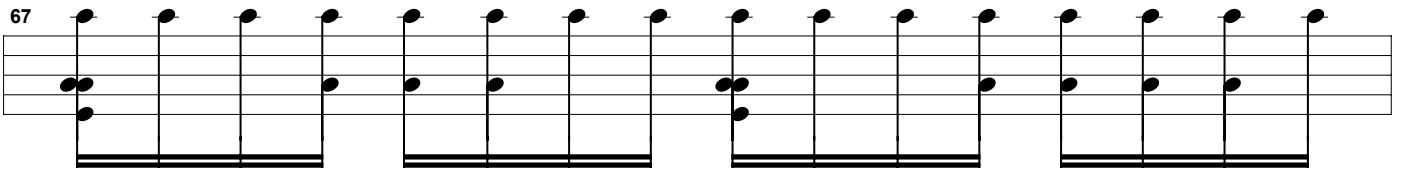
Detailed description: This block shows the first measure of the chorus, measure 65. The notation is identical to the previous measures, with notes G4, A4, B4, C5.

66



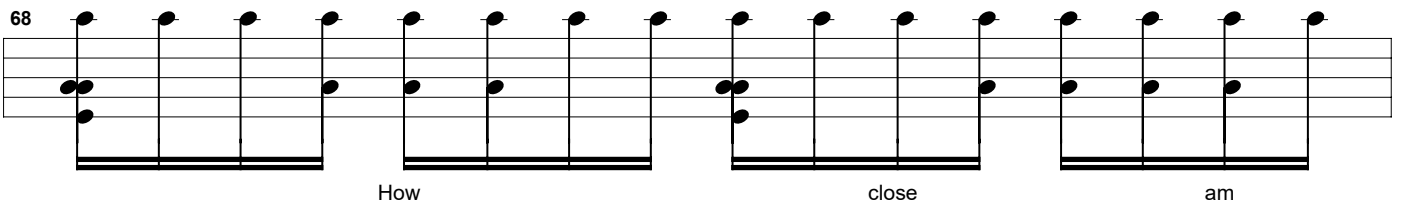
Detailed description: This block shows the second measure of the chorus, measure 66. The notation is identical to the previous measures, with notes G4, A4, B4, C5.

67



Detailed description: This block shows the third measure of the chorus, measure 67. The notation is identical to the previous measures, with notes G4, A4, B4, C5.

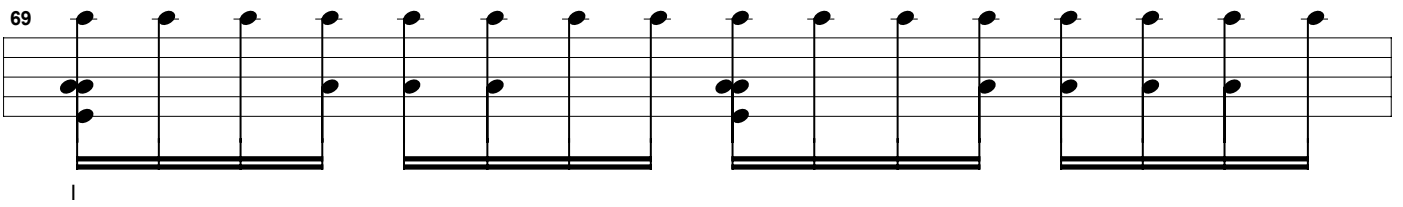
68



How close am

Detailed description: This block shows the fourth measure of the chorus, measure 68. The notation is identical to the previous measures, with notes G4, A4, B4, C5. The lyrics 'How close am' are positioned below the staff, with 'How' under the first measure, 'close' under the second, and 'am' under the fourth.

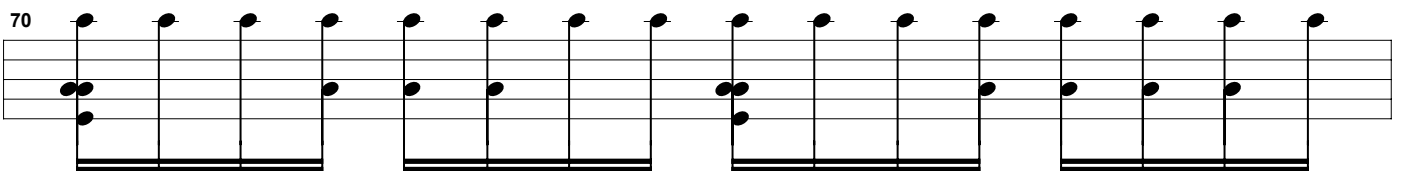
69



I

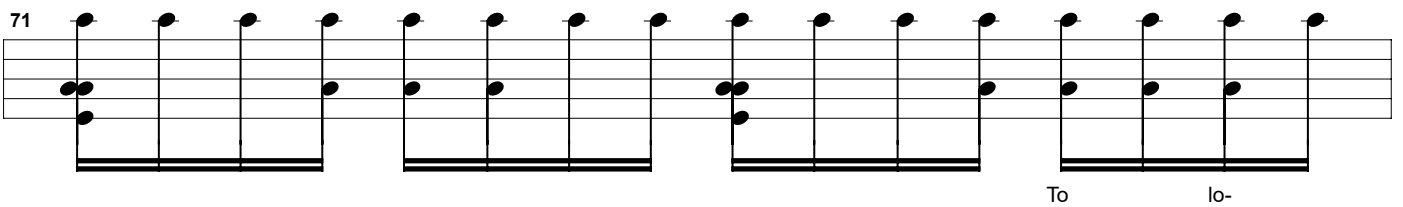
Detailed description: This block shows the fifth measure of the chorus, measure 69. The notation is identical to the previous measures, with notes G4, A4, B4, C5. The lyric 'I' is positioned below the first measure.

70



Detailed description: This block shows the sixth measure of the chorus, measure 70. The notation is identical to the previous measures, with notes G4, A4, B4, C5.

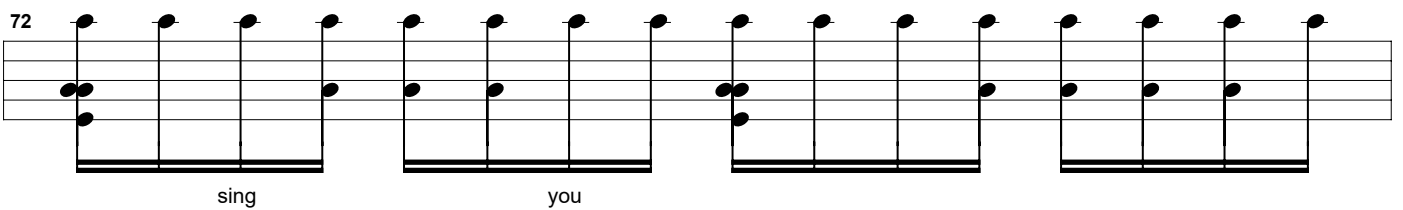
71



To lo-

Detailed description: This block shows the seventh measure of the chorus, measure 71. The notation is identical to the previous measures, with notes G4, A4, B4, C5. The lyrics 'To lo-' are positioned below the staff, with 'To' under the first measure and 'lo-' under the second.

72



sing you

Detailed description: This block shows the eighth measure of the chorus, measure 72. The notation is identical to the previous measures, with notes G4, A4, B4, C5. The lyrics 'sing you' are positioned below the staff, with 'sing' under the first measure and 'you' under the second.

Post-Chorus

73

Musical notation for measure 73, featuring a guitar chord progression with a bass line. The notation is presented on a six-line staff with a double bass line below it. The measure is divided into four equal parts, each containing a chord and a bass note.

74

Musical notation for measure 74, featuring a guitar chord progression with a bass line. The notation is presented on a six-line staff with a double bass line below it. The measure is divided into four equal parts, each containing a chord and a bass note.

75

Musical notation for measure 75, featuring a guitar chord progression with a bass line. The notation is presented on a six-line staff with a double bass line below it. The measure is divided into four equal parts, each containing a chord and a bass note.

76

Musical notation for measure 76, featuring a guitar chord progression with a bass line. The notation is presented on a six-line staff with a double bass line below it. The measure is divided into four equal parts, each containing a chord and a bass note.

77

Musical notation for measure 77, featuring a guitar chord progression with a bass line. The notation is presented on a six-line staff with a double bass line below it. The measure is divided into four equal parts, each containing a chord and a bass note.

78

Musical notation for measure 78, featuring a guitar chord progression with a bass line. The notation is presented on a six-line staff with a double bass line below it. The measure is divided into four equal parts, each containing a chord and a bass note.

79

Musical notation for measure 79, featuring a guitar chord progression with a bass line. The notation is presented on a six-line staff with a double bass line below it. The measure is divided into four equal parts, each containing a chord and a bass note.

80

Musical notation for measure 80, featuring a guitar chord progression with a bass line. The notation is presented on a six-line staff with a double bass line below it. The measure is divided into four equal parts, each containing a chord and a bass note.

Bridge

81

Musical notation for measure 81, featuring a guitar chord progression with a bass line. The notation is presented on a six-line staff with a double bass line below it. The measure is divided into four equal parts, each containing a chord and a bass note.

Hey

82

Are you a- wake

83

Yeah I'm right here

84

Well can I ask

85

you

86

87

88

A- bout to- day

Chorus

89

90

91

92

How close am

93

I

94

95

To lo-

96

sing you

97

98

99

100

How close am

101

I

102

103

To lo-

104

sing

Outro

105 106 107 108 109

All content on this page is the property of the copyright owner of the original composition